

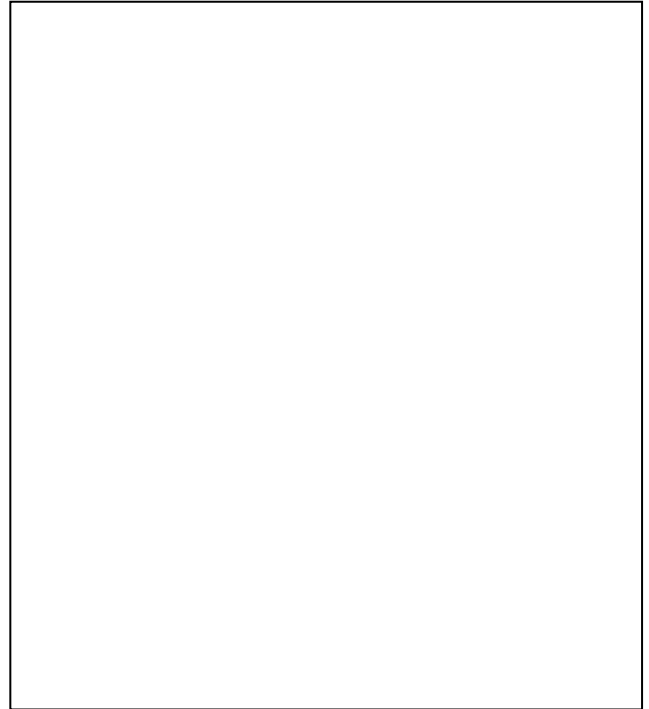
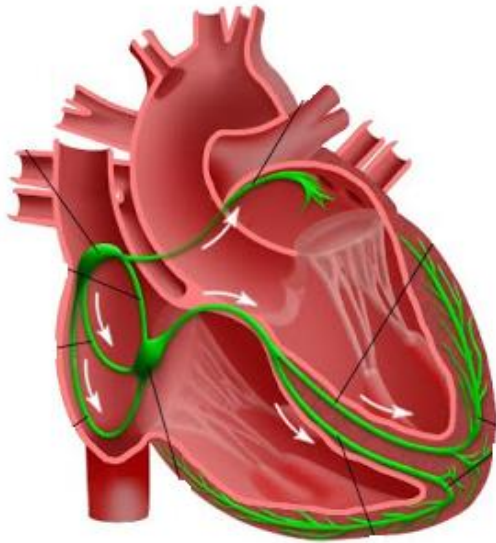
# SA NODAL ASSIGNMENT

Using the following website and your textbook;

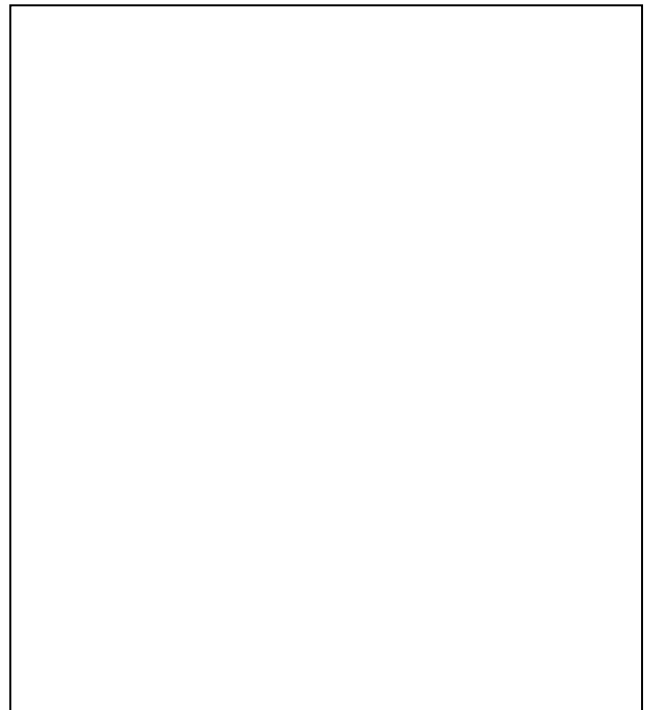
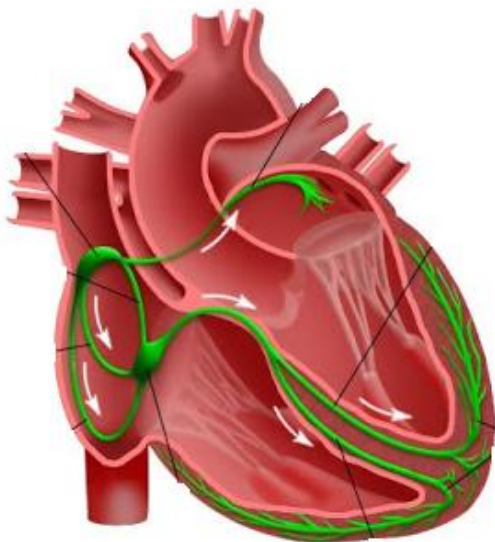
[http://www.phschool.com/science/biology\\_place/biocoach/cardio1/intconduct.html?blah=&step=4](http://www.phschool.com/science/biology_place/biocoach/cardio1/intconduct.html?blah=&step=4)

draw/label and describe the three phases of the Electrical Heart Conduction which facilitates contraction.

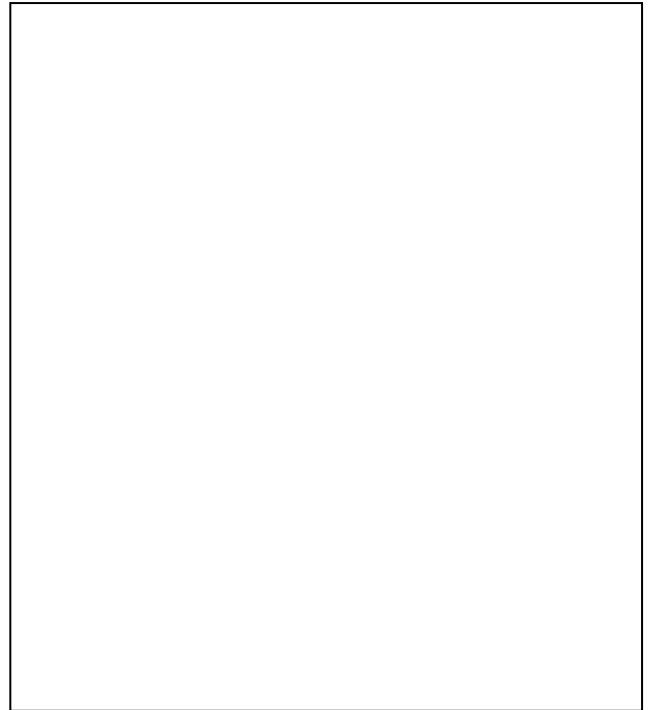
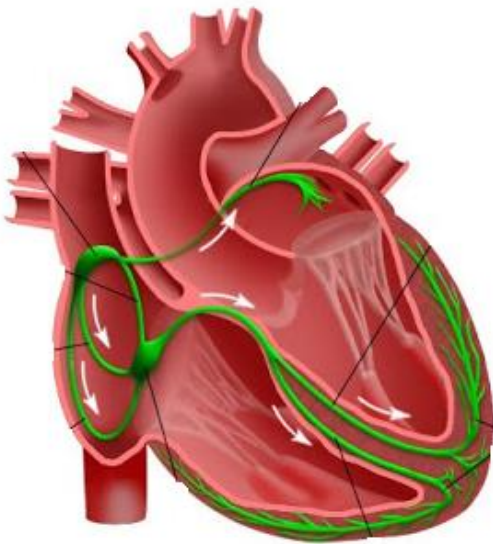
## Phase I:



## Phase II:



**Phase III:**



**Analysis Questions:**

1. What is responsible for the contraction of the atria?
2. What is responsible for the contraction of the ventricle?
3. What has to happen in the heart so the process can repeat?